

CCF Historical and Architectural Series, Volume 1  
By Geoffrey L. Manton

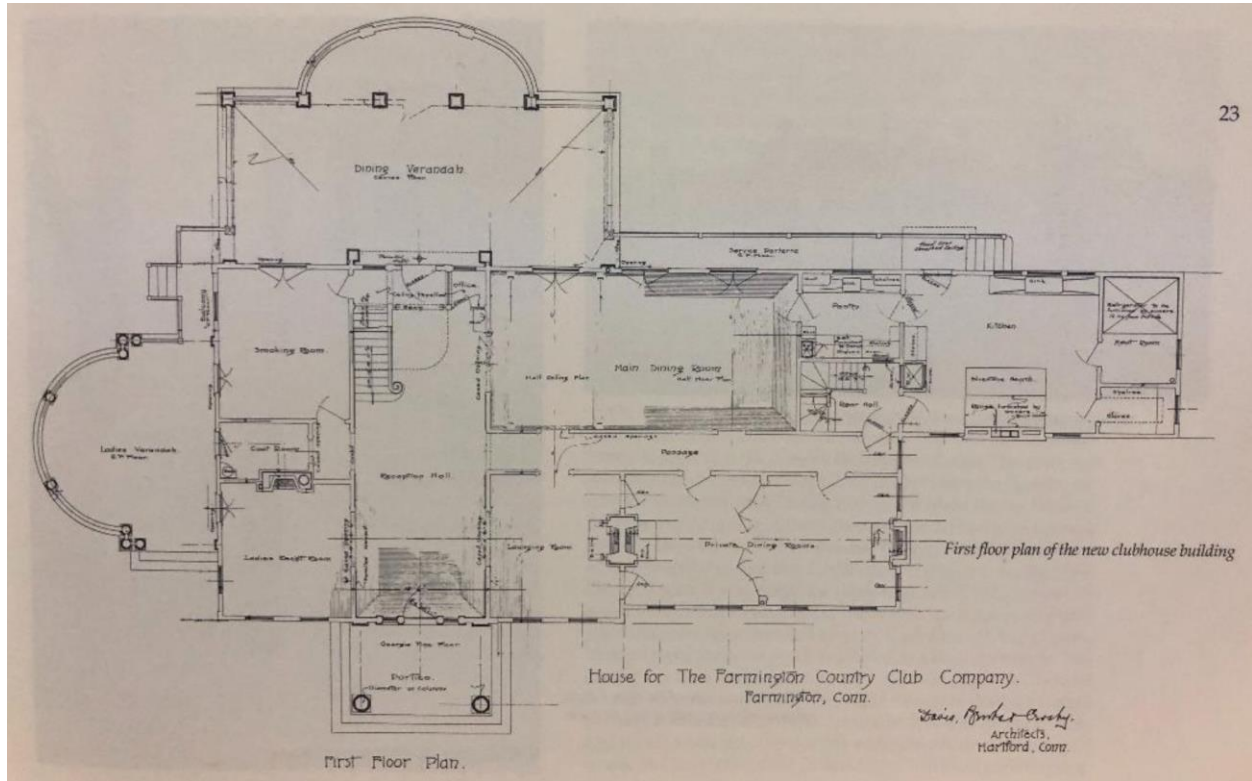
# 1892

A simple reminder to our club's history is stitched on the flags of all 18 holes this year. The Country Club was founded in Farmington in 1892 and is one of the 2 oldest clubs in Connecticut (Greenwich CC also formed in 1892) and is also one of the 6 oldest clubs in New England. Although there's evidence to suggest golf was played on our grounds as early as the year of its founding, The Country Club began as a countryside retreat, organized by some of the region's foremost businessmen as a place to escape from the trials of everyday life and enjoy the open countryside. Much has changed over the past 125+ years, but the concept of coming to the club to relax and get away remains the same. While our original clubhouse - a converted 1767 farmhouse - was destroyed by fire in 1901, our current clubhouse is still among the oldest in the country and has been a fixture at the Town of Farmington's main intersection for almost 120 years.



Like many homes, our clubhouse grew as our family grew. The current clubhouse's original exterior walls ended at the sitting room just left of the main entrance. Over time, terraces and verandahs were enclosed and eventually became new rooms (Informal Dining Room and Murphy Room). New wings were built, and porches were enclosed (Coat Closet). So, it's in keeping with tradition that we have erected our grandest addition yet this past year, our spectacular new patio. It's not a coincidence that several of our clubhouse's additions have begun

with a terrace or a patio. Seated along the foothills of Talcott Mountain, the house is situated to capture prime views of both the Farmington River Valley and the Talcott Mountain ridge line. Although our western boundary has been built up over the years, I imagine that our fore-bearers enjoyed grand sunsets from the western verandah and rooftop terrace. Today, though, we can still gaze upon long views of Talcott Mountain from the comfort of the patio.



Although hunting likely inspired the initial gatherings of our club's founders, golf, curling, tennis, shuffleboard, and boating were other outdoor pastimes at The Country Club. Golf, however, quickly surpassed other sports as the membership's most popular outdoor pursuit. Around the turn of the 20<sup>th</sup> century, the land around Farmington was mostly open countryside. It has been documented that the land north of the clubhouse was unbroken for 2 miles and it is on this land that informal attempts at the game morphed into a formal 9-hole routing created by Arthur Fenn, sometime around 1896. As the game evolved, so did the golf course. Golf holes changed path and gradually lengthened, particularly with the advent of the long flying Haskill ball. In 1918, two years after The Country Club, Farmington, joined the USGA, the 9-hole golf course was revised again, this time with the help of a new architect...Enter Devereux Emmet.

(up next: Devereux Emmet - Golf Architect)